

A Level Programme

An A Level subject, detailed over the next few pages, may be studied either one evening per week or over two sessions on different days during the daytime (where available, please refer to each course for the specific times). If you opt for the daytime course, you will need to attend both sessions. Students of any age will be made to feel welcome on either the daytime or evening courses.

Please complete the Application Form on page 115-116 and send it to the College, you will be invited to an informal interview. Candidates should be aware of the specific entry requirements detailed; but prospective students should know that the College takes a more relaxed approach to the prior experience of mature students.

Length of courses

AS and A2 Levels take one year each to complete; usually assessments take place in June (and possibly January on some programmes, please check with the individual course tutor once the course commences).

A full A Level consists of an AS Level and an A2 Level.

AS Levels

An AS Level is a valuable qualification in its own right. AS Levels may be taken on their own or combined with A2s. AS is a standalone qualification that is valued as half a full A Level qualification.

A2 Levels

On successful completion of an AS Level, you may progress to the A2 Level to achieve a full A Level. A Levels are highly valued qualifications, which can lead into employment or Higher Education courses.

Accounting



Specific entry requirements

Five GCSE passes at Grade C or above. A GCSE pass at Grade C or above in Business Studies, Economics or Accounting is desirable.

Course requirements Text book.

Contents Financial accounting and accounting for management and decision-making.

Examination board AQA

AS Level

DAY	DATE	TIME	WEEKS	FEE	DISCOUNTED FEE	CODE
Mon & Thu	17/09/07 20/09/07	0900-1100 1115-1315	30	£250	£80	22540 D17MA

A2 Level

DAY	DATE	TIME	WEEKS	FEE	DISCOUNTED FEE	CODE
Mon & Thu	17/09/07 20/09/07	1115-1315 0900-1100	30	£250	£80	22540 D27MA



Enrol by post or in person



Interview required, please complete Application Form on page 115.

A Level Programme

Computing



Specific entry requirements

Of your five GCSE passes at Grade C or above, a GCSE pass at Grade C or above in Information and Communication Technology would be beneficial.

Course requirements Text book.

Contents Computer systems, principles of hardware and practical systems development.

Examination board AQA

AS Level

DAY	DATE	TIME	WEEKS	FEE	DISCOUNTED FEE	CODE
Mon & Fri	17/09/07 21/09/07	1415-1615 1115-1315	30	£250	£80	22543 D17MA
Thu	20/09/07	1815-2130	30	£250	£80	22543 E17MA

A2 Level

DAY	DATE	TIME	WEEKS	FEE	DISCOUNTED FEE	CODE
Tue & Fri	18/09/07 21/09/07	0900-1100 1430-1630	30	£250	£80	22543 D27MA

Dance



NEW

Specific entry requirements

Five GCSE passes at Grade C or above, one of which must be in an artistic or creative subject.

Course requirements Text book.

Contents Engagement in appreciation of the diverse, dynamic heritage of dance, promoting spiritual, moral and cultural development.

Examination board AQA

AS Level

DAY	DATE	TIME	WEEKS	FEE	DISCOUNTED FEE	CODE
Wed & Thu	19/09/07 20/09/07	1115-1315 0900-1100	30	£250	£80	22563 D17MA
Thu	20/09/07	1815-2130	30	£250	£80	22563 E17MA

Economics



Specific entry requirements

Five GCSE passes at Grade C or above, together with a commitment and a genuine interest in the subject.

Course requirements Text book.

Contents Markets and market failure, the national economy and markets at work.

Examination board AQA

AS Level

DAY	DATE	TIME	WEEKS	FEE	DISCOUNTED FEE	CODE
Thu & Fri	20/09/07 21/09/07	1415-1615 0900-1100	30	£250	£80	22544 D17MA
Tue	18/09/07	1815-2130	30	£250	£80	22544 E17MA

A2 Level

DAY	DATE	TIME	WEEKS	FEE	DISCOUNTED FEE	CODE
Tue & Thu	18/09/07 20/09/07	1115-1315 1115-1315	30	£250	£80	22544 D27MA

A Level Programme

English Language



Specific entry requirements

One of your five GCSE passes at Grade C or above must be English.

Course requirements Text book.

Contents Discovering, using and interacting through language.

Examination board Edexcel

AS Level

DAY	DATE	TIME	WEEKS	FEE	DISCOUNTED FEE	CODE
Mon & Thu	17/09/07	0900-1100	30	£250	£80	22545 D17MA
Thu	20/09/07	1415-1615				
Thu	20/09/07	1815-2130	30	£250	£80	22545 E17MA

English Literature



Specific entry requirements

One of your five GCSE passes at Grade C or above must be English.

Course requirements Text book.

Contents Drama, poetry, pre-1900 prose and Shakespeare in context.

Examination board Edexcel

AS Level

DAY	DATE	TIME	WEEKS	FEE	DISCOUNTED FEE	CODE
Tue & Fri	18/09/07	1415-1615	30	£250	£80	22546 D17MA
Fri	21/09/07	0900-1100				
Tue	18/09/07	1815-2130	30	£250	£80	22546 E17MA

Film Studies



Specific entry requirements

Of your five GCSE passes at Grade C or above, ideally one pass should be in an artistic area.

Course requirements Text book.

Contents Film making, producers and audiences, messages and values.

Examination board WJEC

AS Level

DAY	DATE	TIME	WEEKS	FEE	DISCOUNTED FEE	CODE
Mon & Fri	17/09/07	1415-1615	30	£250	£80	22547 D17MA
Fri	21/09/07	1415-1615				
Mon	17/09/07	1815-2130	30	£250	£80	22547 E17MA

A2 Level

DAY	DATE	TIME	WEEKS	FEE	DISCOUNTED FEE	CODE
Tue	18/09/07	1815-2130	30	£250	£80	22547 E27MA

A Level Programme

Human Biology



Specific entry requirements

Of your five GCSE passes at Grade C or above, two GCSE Science passes at Grade C or above are preferred.

Course requirements Text book.

Contents Molecules, cells, systems, pathogens, disease and centre assessed coursework.

Examination board AQA

AS Level

DAY	DATE	TIME	WEEKS	FEE	DISCOUNTED FEE	CODE
Thu & Fri	20/09/07 21/09/07	0900-1100 1115-1315	30	£250	£80	22553 D17MA
Thu	20/09/07	1815-2130	30	£250	£80	22553 E17MA

A2 Level

DAY	DATE	TIME	WEEKS	FEE	DISCOUNTED FEE	CODE
Thu & Fri	20/09/07 21/09/07	1115-1315 1415-1615	30	£250	£80	22553 D27MA

Law



Specific entry requirements

Of your five GCSE passes at Grade C or above, one must be English.

Course requirements Text book.

Contents The legal system of England and Wales, machinery of justice, personnel, the legal profession, judiciary and magistracy.

Examination board WJEC

AS Level

DAY	DATE	TIME	WEEKS	FEE	DISCOUNTED FEE	CODE
Tue & Fri	18/09/07 21/09/07	1115-1315 0900-1100	30	£250	£80	22554 D17MA
Tue	18/09/07	1815-2130	30	£250	£80	22554 E17MA

A2 Level

DAY	DATE	TIME	WEEKS	FEE	DISCOUNTED FEE	CODE
Tue & Fri	18/09/07 21/09/07	0900-1100 1115-1315	30	£250	£80	22554 D27MA



Enrol by post or in person



Interview required, please complete Application Form on page 115.

A Level Programme

Maths



Specific entry requirements

One of your five GCSE passes at Grade C or above must be in Maths.

Course requirements Text book.

Contents Algebra, geometry, series, calculus, sequence, trigonometry, exponentials, logarithms, mean, standard deviation, regression and probability.

Examination board Edexcel

AS Level

DAY	DATE	TIME	WEEKS	FEE	DISCOUNTED FEE	CODE
Tue & Thu	18/09/07 20/09/07	1115-1315 0900-1100	30	£250	£80	22555 D17MA
Mon	17/09/07	1815-2130	30	£250	£80	22555 E17MA

A2 Level

DAY	DATE	TIME	WEEKS	FEE	DISCOUNTED FEE	CODE
Mon & Fri	17/09/07 21/09/07	0900-1100 1115-1315	30	£250	£80	22555 D27MA
Thu	20/09/07	1815-2130	30	£250	£80	22555 E27MA

Photography



Specific entry requirements

Of your five GCSE passes at Grade C or above, one must be in a creative subject.

Course requirements Text book and own slr/digital camera.

Contents Portraiture, documentary and photojournalism, landscape photography (urban, rural, coastal), working with objects (still life or from the natural world) and experimental imagery.

Examination board Edexcel

AS Level

DAY	DATE	TIME	WEEKS	FEE	DISCOUNTED FEE	CODE
Wed & Fri	19/09/07 21/09/07	1415-1615 1115-1315	30	£250	£80	22556 D17MA
Wed	19/09/07	1815-2130	30	£250	£80	22556 E17MA

A2 Level

DAY	DATE	TIME	WEEKS	FEE	DISCOUNTED FEE	CODE
Mon	17/09/07	1815-2130	30	£250	£80	22556 E27MA



Enrol by post or in person



Interview required, please complete Application Form on page 115.

A Level Programme

Psychology



Specific entry requirements

One of your five GCSE passes at Grade C or above must be in English.

Course requirements Text book.

Contents Introduction to psychology, social and cognitive psychology and practical investigation.

Examination board AQA

AS Level

DAY	DATE	TIME	WEEKS	FEE	DISCOUNTED FEE	CODE
Mon & Thu	17/09/07 20/09/07	1115-1315 1115-1315	30	£250	£80	22557 D17MA
Mon	17/09/07	1815-2130	30	£250	£80	22557 E17MA

A2 Level

DAY	DATE	TIME	WEEKS	FEE	DISCOUNTED FEE	CODE
Mon & Thu	17/09/07 20/09/07	0900-1100 1415-1615	30	£250	£80	22557 D27MA
Thu	20/09/07	1815-2130	30	£250	£80	22557 E27MA

Philosophy



NEW

Specific entry requirements

One of your five GCSE passes at Grade C or above must be in English.

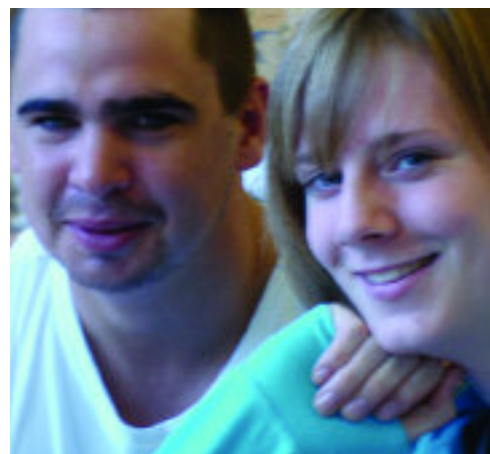
Course requirements Text book.

Contents Theory of knowledge and moral philosophy or the philosophy of religion.

Examination board AQA

AS Level

DAY	DATE	TIME	WEEKS	FEE	DISCOUNTED FEE	CODE
Wed & Thu	19/09/07 20/09/07	1415-1615 1415-1615	30	£250	£80	22562 D17MA



Enrol by post or in person



Interview required, please complete Application Form on page 115.

A Level Programme

Sociology



Specific entry requirements

One of your five GCSE passes at Grade C or above must be in English.

Course requirements Text book.

Contents Families and households, health, mass media, education, wealth, poverty and welfare, work and leisure, plus sociological methods.

Examination board AQA

AS Level

DAY	DATE	TIME	WEEKS	FEE	DISCOUNTED FEE	CODE
Tue & Wed	18/09/07	0900-1100	30	£250	£80	22558 D17MA
Wed	19/09/07	1115-1315				
Wed	19/09/07	1815-2130	30	£250	£80	22558 E17MA

A2 Level

DAY	DATE	TIME	WEEKS	FEE	DISCOUNTED FEE	CODE
Mon & Wed	17/09/07	1415-1615	30	£250	£80	22558 D27MA
	19/09/07	0900-1100				

Spanish



Specific entry requirements

Preferably Grade C or above in Spanish at GCSE. A Grade C in another modern European language would be advantageous.

Course requirements Text book.

Contents Young people today, aspects of society, people and society.

Examination board AQA

AS Level

DAY	DATE	TIME	WEEKS	FEE	DISCOUNTED FEE	CODE
Wed & Thu	19/09/07	1415-1615	30	£250	£80	22559 D17MA
	20/09/07	1115-1315				
Wed	19/09/07	1815-2130	30	£250	£80	22559 E17MA



Enrol by post or in person



Interview required, please complete Application Form on page 115.