

Engineering (Electrical)

City & Guilds 2251 NVQ Performing Engineering Operations - Electrical

Level 2



You will gain and develop skills in the field of electrical/electronic engineering. You will study wiring and testing electrical circuits, and building and testing electrical circuits. You will require preferably four GCSEs and you will need to discuss your requirements with the course tutor before enrolling on the course.

DAY	DATE	TIME	WEEKS	FEE	DISCOUNTED FEE	CODE
Year 1 of 2						
Mon	24/09/07	0900-1630	30	£450	£200	21145 D17KA
Year 2 of 2						
Fri	28/09/07	0900-1630	30	£450	£200	21145 D27KA

This course takes place at Kingsland Skills and Enterprise Centre, Houghton Regis.

City & Guilds 2330 Electrical Installation - Certificate in Electrotechnical Technology

Level 2



If you are a learner or apprenticeship candidate already working or wishing to work in the electrical industry, this is an ideal course for you. You will gain the essential underpinning knowledge required for the electrical installations of buildings and structures. You will carry out practical activities designed to enhance "off the job training"; these are then assessed internally to show your attainment in this area. When you successfully complete this course, you may progress directly to the Level 3 Certificate in Electrotechnical Technology. You will be required to discuss the details of the course with the course tutor. You may need to attend College on some Saturdays.

DAY	DATE	TIME	WEEKS	FEE	DISCOUNTED FEE	CODE
Mon & Wed	24/09/07	1830-2130	30	£450	£200	21141 D17KA
Tue	25/09/07	0900-1600	30	£450	£200	21141 D17KA

This course takes place at Kingsland Skills and Enterprise Centre, Houghton Regis.

City & Guilds 2330 Electrical Installation - Certificate in Electrotechnical Technology

Level 3



This is an advanced course, which is ideal for you if you are a learner or apprenticeship candidate already working in the electrical industry. You will gain installation knowledge of buildings and structures, plus an understanding and working knowledge of the Wiring Regulations and aspects of inspection and testing. Practical activities are designed to recognise both the importance of your ability to work safely and efficiently and the principles and process applicable to the inspection, testing and commissioning of electrical installations.

DAY	DATE	TIME	WEEKS	FEE	DISCOUNTED FEE	CODE
Mon	24/09/07	0900-1600	30	£450	£200	21143 D17KA
Tue & Thu	25/09/07	1830-2130	30	£450	£200	21143 E17KA

This course takes place at Kingsland Skills and Enterprise Centre, Houghton Regis.



Enrol by post or in person



Interview required, please complete Application Form on page 115.

Engineering (Electrical)

City & Guilds 2381 Wiring Regulations (IEE 16th Edition)

Level 3



You will gain a good working knowledge of wiring regulations and may currently be employed in installing or maintaining electrical installations or as a supervisor or safety officer. You will become familiar with the layout, content and use of the Regulations. You will need to discuss your requirements with the course tutor before enrolling on the course.

DAY	DATE	TIME	WEEKS	FEE	DISCOUNTED FEE	CODE
Tue	25/09/07	1830-2130	10	£225	£136	21140 E07KA
Sat	03/11/07	0900-1500	5	£225	£136	21140 D07KA
Tue	08/01/08	1830-2130	10	£225	£136	21140 E07KB
Sat	02/02/08	0900-1500	5	£225	£136	21140 D07KB
Tue	15/04/08	1830-2130	10	£225	£136	21140 E07KC
Sat	17/05/08	0900-1500	5	£225	£136	21140 D07KC

This course takes place at Kingsland Skills and Enterprise Centre, Houghton Regis.

City & Guilds 2391 Inspection, Testing and Certification of Electrical Installation

Level 3

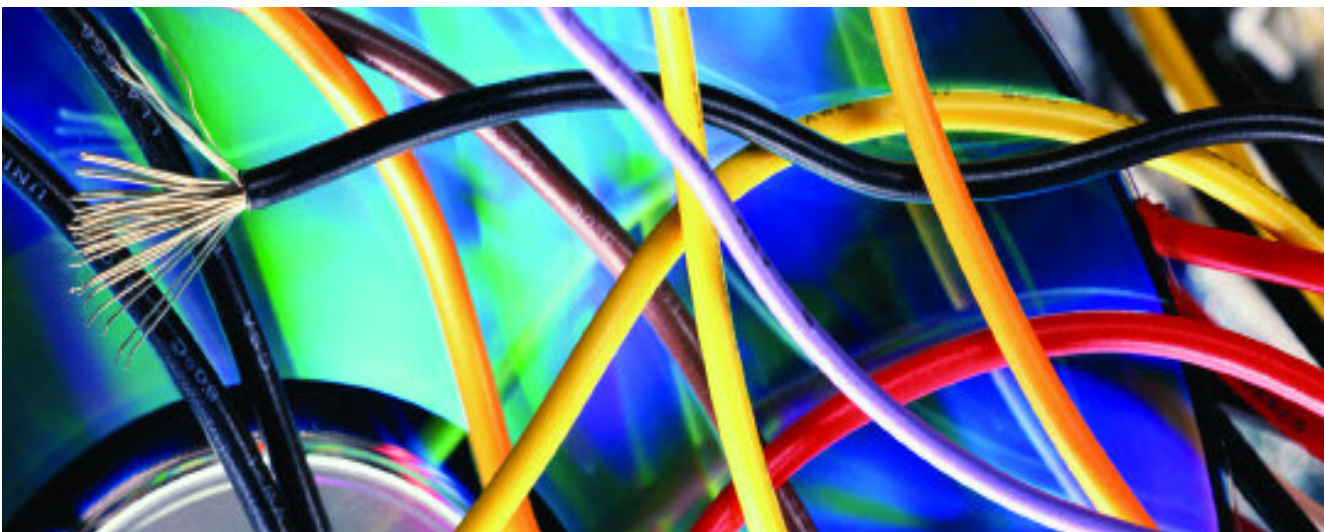


As a practicing electrician or maintenance engineer, you will learn and develop inspection, testing and certification techniques. The course consists of 30 hours' theory, followed by assessments. The latter consists of an external examination and a practical test conducted by the tutor after the exam. To take the course, you will need the City & Guilds 2381 Wiring Regulations (IEE 16th Edition).

(One extra session will be arranged to carry out the practical assessment)

DAY	DATE	TIME	WEEKS	FEE	DISCOUNTED FEE	CODE
Thu	27/09/07	1830-2130	10	£320	N/A	21142 E07KA
Sat	06/10/07	0900-1400	6	£320	N/A	21142 D07KA
Thu	10/01/08	1830-2130	10	£320	N/A	21142 E07KB
Sat	26/01/08	0900-1400	6	£320	N/A	21142 D07KB
Thu	10/04/08	1830-2130	10	£320	N/A	21142 E07KC
Sat	19/04/08	0900-1400	6	£320	N/A	21142 D07KC

This course takes place at Kingsland Skills and Enterprise Centre, Houghton Regis.



Enrol by post or in person



Interview required, please complete Application Form on page 115.

Engineering (Electrical)

City & Guilds 2377 PAT Testing (Portable Appliance Testing)

Level 3



The Electricity at Work Regulations Act (1989) requires anyone responsible for inspecting, testing and certifying Portable Electrical Apparatus (Normal Domestic and Light Industrial) to be trained to a competent level. This course is designed for students who have a basic knowledge of electricity. It is suitable for managers, supervisors and staff who need to understand and implement safe working practices when dealing with electrical appliances and anyone who works in an environment that requires testing of electrical equipment to prove electrical safety.

The course will cover the following:

- Overview of Electricity at Work of required electrical theory
- Classes of Equipment
- Types of Inspection and Test
- Apparatus covered by this course
- Inspection procedures and equipment
- Testing of apparatus with approved Portable Appliance Testers (PAT)
- Documentation required by Electricity at Work Act
- Certification Test.

You will also need to purchase the following text book: Code of Practice for In-Service Inspection and Testing of Electrical Equipment.

DAY	DATE	TIME	WEEKS	FEE	DISCOUNTED FEE	CODE
Thu	15/11/07	0900-2000	1	£150	£113	21146 D07KA
Thu	06/03/08	0900-2000	1	£150	£113	21146 D07KB
Thu	26/06/08	0900-2000	1	£150	£113	21146 D07KC

This course takes place at Kingsland Skills and Enterprise Centre, Houghton Regis.

BTEC National Certificate Electrical Engineering

Level 3



This is a comprehensive engineering course for technicians with design, production or supervisory responsibilities. You will need 4 GCSEs at Grade C and above or equivalent qualifications or experience, if you are a mature student. You will need to discuss your requirements with the course tutor before enrolling on this course.

DAY	DATE	TIME	WEEKS	FEE	DISCOUNTED FEE	CODE
Year 1 of 2						
Tue	25/09/07	0900-1800	30	£490	£151	21144 D17KA
Year 2 of 2						
Wed	26/09/07	0900-1800	30	£490	£151	21144 D27KA

This course takes place at Kingsland Skills and Enterprise Centre, Houghton Regis.



Enrol by post or in person



Interview required, please complete Application Form on page 115.

Engineering (Mechanical / Electrical)

NVQ Performing Engineering Operations (PEO)

Level 1



You will gain basic engineering skills in a choice of disciplines, including electrical installation, welding and hand skills. Successful completion of this course will lead you to entry on a Level 2 qualification. You do not need any formal qualifications to take this course. Other days of attendance are available, subject to demand. You will need to discuss your requirements with the course tutor before enrolling on the course.

DAY	DATE	TIME	WEEKS	FEE	DISCOUNTED FEE	CODE
Mon	24/09/07	0900-1630	30	£450	£200	21148 D17MA

NVQ Performing Engineering Operations (PEO)

Level 2



You will benefit from a quality environment in which to complete the six units of engineering competences that make up the NVQ course in basic engineering. You will need four GCSE passes to take the course. You will also need to discuss your requirements with the course tutor before enrolling on the course.

DAY	DATE	TIME	WEEKS	FEE	DISCOUNTED FEE	CODE
Year 1 of 2						
Mon	24/09/07	0900-1630	30	£450	£200	21149 D17MA
Year 2 of 2						
Tue	25/09/07	0900-1630	30	£450	£200	21149 D27MA

Please note: the fee shown is per annum.

BTEC National Certificate Mechanical Engineering

Level 3



This is a comprehensive mechanical engineering course for technicians with design, production or supervisory responsibilities. You will require four GCSEs at Grade C or above, or equivalent qualifications and experience if you are a mature student. Evening attendance can be arranged, subject to demand. You will need to discuss your requirements with the course tutor before enrolling on the course.

DAY	DATE	TIME	WEEKS	FEE	DISCOUNTED FEE	CODE
Year 1 of 2						
Tue	25/09/07	0900-1800	30	£625	£250	21150 D17MA
Year 2 of 2						
Mon	24/09/07	0900-1800	30	£495	£200	21150 D27MA

Please note: the fee shown is per annum.



Enrol by post or in person



Interview required, please complete Application Form on page 115.

Engineering (Mechanical / Electrical)

Higher National Certificate in Operations Engineering (HNC)



You will acquire a range of skills in mechanical, electrical and electronic control systems, required for the effective operation and maintenance of plant and engineering processes. You will choose from a number of core units and optional ones to gain the relevant knowledge and experience to meet your specific requirements. Units include: Applications of Pneumatics and Hydraulics, PLC, Electrical/Electronic Principles, Utilisation of Electrical Energy, Thermodynamics and Microprocessor Systems. You will need a National Certificate in Engineering or one A level and three GCSE passes in relevant subjects or an equivalent combination of entry qualifications and experience. Other days of attendance can be arranged, subject to demand.

DAY	DATE	TIME	WEEKS	FEE	DISCOUNTED FEE	CODE
Year 1 of 2						
Mon	24/09/07	0900-1800	30	£800	N/A	21151 D17MA
Year 2 of 2						
Thu	27/09/07	0900-1800	30	£800	N/A	21151 D27MA

Please note: the fee shown is per annum.

City & Guilds 2800 Certificate in Engineering (Maintenance, Production and Welding)

Level 3



If you are either following an NVQ Training Programme or wish to gain progression in maintenance, production engineering and/or welding, this course is for you. You will study a core of general engineering units plus optional units, covering a range of electro/mechanical skills in maintenance, production engineering and welding.

DAY	DATE	TIME	WEEKS	FEE	DISCOUNTED FEE	CODE
Year 1 of 2						
Wed	26/09/07	0900-1630	30	£450	£200	21152 D17MA
Year 2 of 2						
Thu	27/09/07	0900-1630	30	£370	£175	21152 D27MA

Please note: the fee shown is per annum.

Pneumatic Systems Design and Maintenance

Level 3



This course is concerned with the principles of pneumatic power transmission, identifying pneumatic components and their symbols and the interpretation of circuit diagrams, the procedures and techniques involved with isolating systems safely, the ability to construct basic circuits from given information. It also covers removing and replacing components and restoring a system back to a full working condition, causes of common faults in pneumatic systems and the selection of appropriate tools and equipment. A City and Guilds unit certificate will be awarded on successful completion.

DAY	DATE	TIME	WEEKS	FEE	DISCOUNTED FEE	CODE
Wed	26/09/07	1830-1930	30	£350	N/A	21154 E17MA



Enrol by post or in person



Interview required, please complete Application Form on page 115.